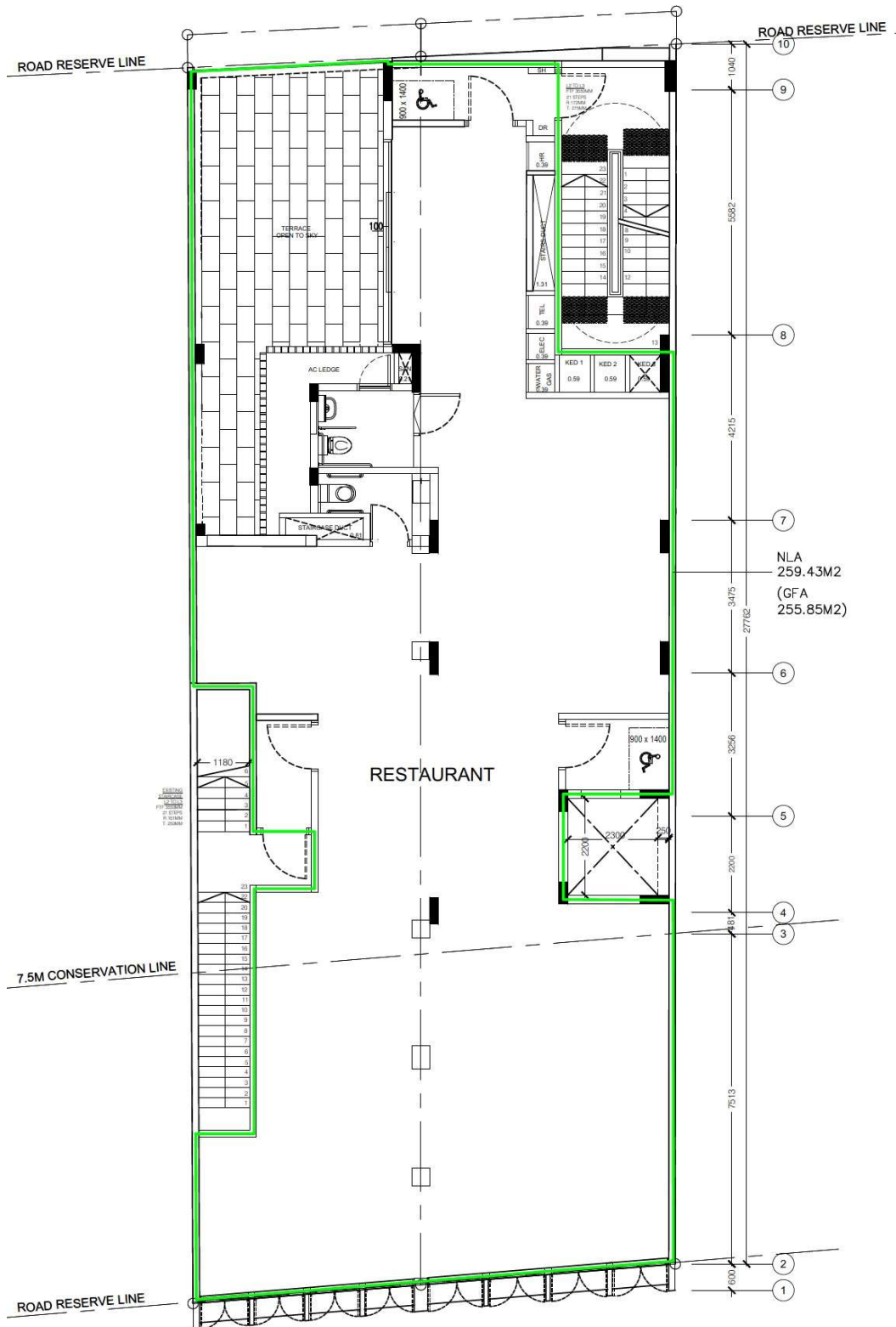


# 38/39 NORTH CANAL ROAD

SINGAPORE 059294

2<sup>nd</sup> Storey Plan



For further info, please contact : Business Space & Retail 6293 3228

Copyright 2016, Edmund Tie & Company. The information herein was lawfully obtained from sources we consider reliable. Edmund Tie & Company is not responsible and expressly disclaims all liability for omissions, errors, prior sales, withdrawal from the market or change in price. The Seller (or Lessor, as the case may be) and broker make no representation with regard to the environmental and physical condition of the property and recommend the Purchaser's (or Lessee's) independent investigation.